

DOCUMENT 00 90 00
ADDENDUM

ADDENDUM NO. [3] Date: February 26, 2018
RE: HO-CHUNK NATION
INDEPENDENT LIVING FACILITY
BRANCHED ANTLER AVE
BLACK RIVER FALLS, WISCONSIN 54615
HSR PROJECT NO. 15027

FROM: HSR Associates, Inc
100 Milwaukee Street
La Crosse, WI 54603
(608) 784-1830

To: Prospective Bidders

This addendum forms a part of the Contract Documents and modifies the original Bidding Documents dated February 2018. Acknowledge receipt of this Addendum in the space provided on the bid form. Failure to do so may subject the Bidder to disqualification.

This Addendum consists of [2] pages, and [3] 30 x 42 drawings.

CHANGES TO SPECIFICATIONS

1. Section 23 09 93 CONTROLS
 - a. 2.01: Delete Paragraph A and replace with the following; "System shall be based on Automated Logic Controls. No substitutes."

2. Section 23 33 00 AIR DUCT ACCESSORIES
 - a. Add 3.08 Dryer Ducts as follows:

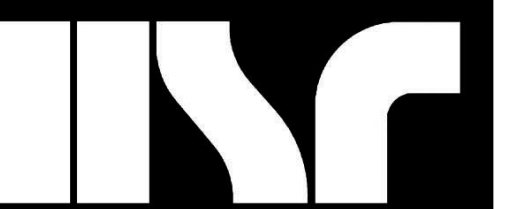
LENGTH IDENTIFICATION. (IMC 504.6.5) Where the exhaust duct is concealed within the building construction, the equivalent length of the exhaust duct shall be identified on a permanent label or tag. The label or tag shall be located within 6 feet (1829 mm) of the exhaust duct connection.

PROTECTION REQUIRED. (IMC 504.6.7) Protective shield plates shall be placed where nails or screws from finish or other work are likely to penetrate the clothes dryer exhaust duct. Shield plates shall be placed on the finished face of all framing members where there is less than 1 1/4 inches (32 mm) between the duct and the finished face of the framing member. Protective shield plates shall be constructed of steel, have a thickness of 0.062 inch (1.6 mm) and extend a minimum of 2 inches (51 mm) above sole plates and below top plates.

CHANGES TO DRAWINGS

3. Sheet M100R MECHANICAL VENTILATION PLAN – SEGMENT 'A' 30 x 42 attached hereto
 - a. Revisions clouded on Drawing.
4. Sheet M101R MECHANICAL VENTILATION PLAN – SEGMENT 'B' 30 x 42 attached hereto
 - a. Revisions clouded on Drawing.
5. Sheet M104R MECHANICAL PIPING PLAN – SEGMENT 'B' 30 x 42 attached hereto
 - a. Revisions clouded on Drawing

END OF DOCUMENT 00 90 00

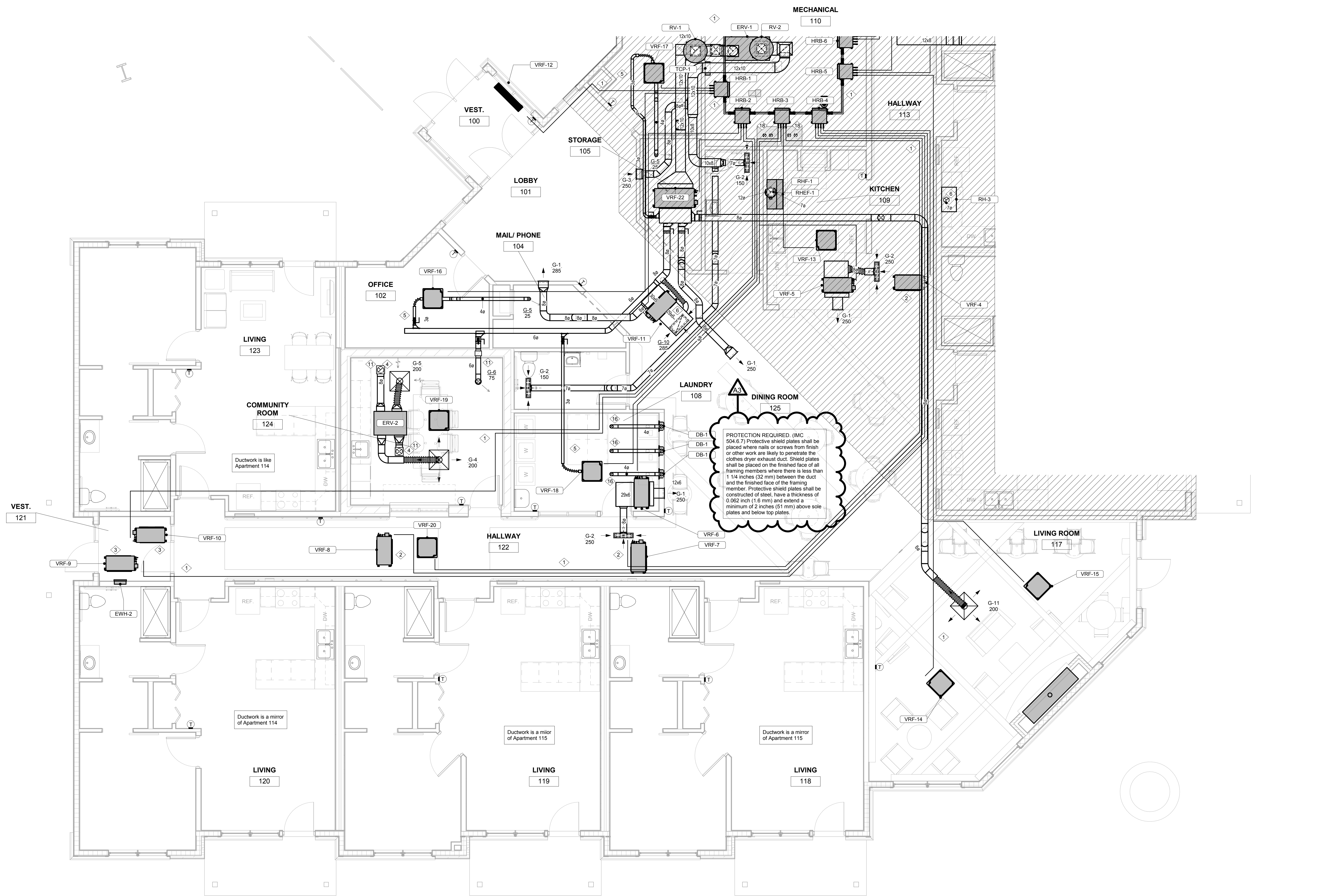


No.	Description	Date
A3	Addendum 3	2-26-18

Graphic Scale:
VARIES

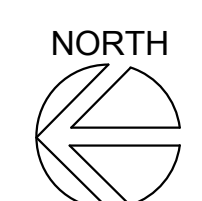
Last Update:
2/26/2018 11:33:36 AM

M100R

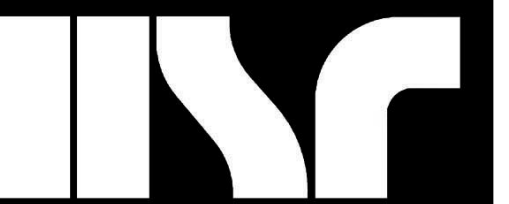


PROTECTION REQUIRED. (IMC 504.6.7) Protective shield plates shall be placed where nails or screws from finish or other work are likely to penetrate the clothes dryer exhaust duct. Shield plates shall be placed on the finished face of all framing members where there is less than 1 1/4 inches (32 mm) between the duct and the finished face of the framing member. Protective shield plates shall be constructed of steel, have a thickness of 0.062 inch (1.6 mm) and extend a minimum of 2 inches (51 mm) above sole plates and below top plates.

Keynote Number	Keynote Description
1	VRF system refrigerant pipe sets (typical)
2	Ductwork similar to Apartment 115
3	Ductwork similar to Apartment 114
4	8" dia duct up through roof terminating with roof jack.
5	Outside air duct, 10 CFM.
6	7" dia duct up through roof terminating with roof jack.
7	Mounted low on wall just above base board.
8	Mounted high on wall near ceiling.
9	In-floor temperature sensor, one per manifold. Install in conduit.
10	3/4" HWS & HWR down to manifold (typical)
11	Fire Damper.
12	Tie in top of condensate drain pipe for extension of VRF coil drains, typical.
13	Condensate drain pipe down to floor drain.
14	Coil condensate pipe from VRF drain pump, typical.
15	Clean Out, typical.
16	4" dryer vent up through roof terminating with roof jack, 20 equivalent feet length.
17	Pressure sensor.
18	4" flue and combustion air up through roof.

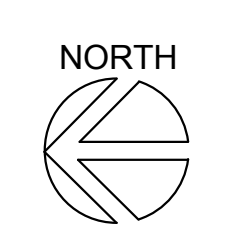
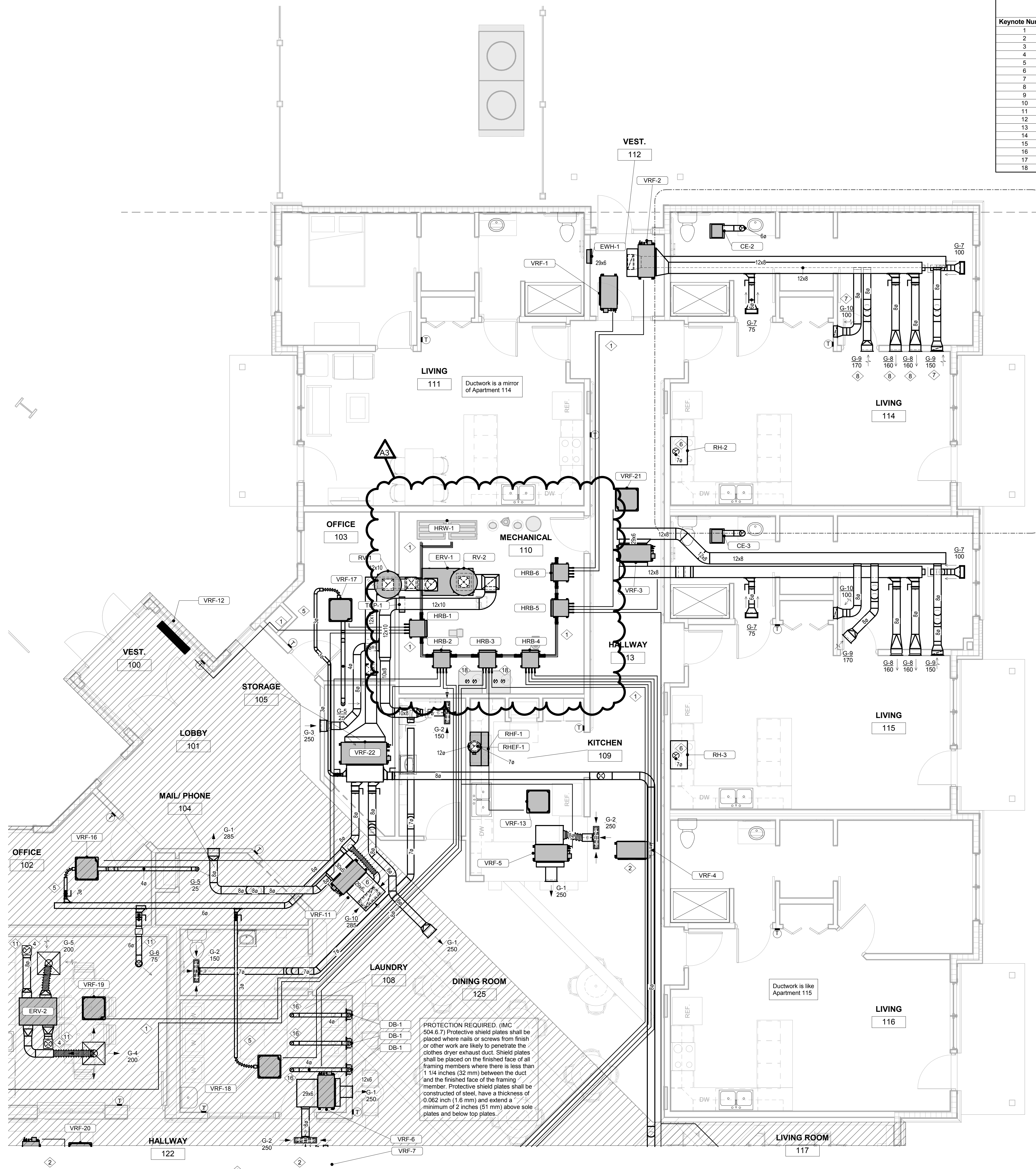


1 MECHANICAL VENTILATION PLAN - SEGMENT A
1/4" = 1'-0"



Consultant:

Keynote Number	Keynote Description
1	VRF system refrigerant pipe sets (typical)
2	Ductwork similar to Apartment 115
3	Ductwork similar to Apartment 114
4	8" dia duct up through roof terminating with roof jack.
5	Outside air duct, 10 CFM.
6	7" dia duct up through roof terminating with roof jack.
7	Mounted low on wall just above base board.
8	Mounted high on wall near ceiling.
9	In-floor temperature sensor, one per manifold. Install in conduit.
10	3/4" HWS & HWR down to manifold (typical)
11	Fire Damper
12	Tee in top of condensate drain pipe for extension of VRF coil drains, typical.
13	Condensate drain pipe down to floor drain.
14	Coil condensate pipe from VRF drain pump, typical.
15	Clean Out, typical.
16	4" dryer vent up through roof terminating with roof jack. 20 equivalent feet length.
17	Pressure sensor.
18	4" flue and combustion air up through roof.



1 MECHANICAL VENTILATION PLAN - SEGMENT B

1/4" = 1'-0"

Project Title: **HO-CHUNK NATION INDEPENDENT LIVING FACILITY**
 Project Location: **BRANCHED ANTLER AVE., BLACK RIVER FALLS, WISCONSIN**
 Sheet Title: **MECHANICAL VENTILATION PLAN - SEGMENT B**

HSR Project Number: **15027**
 Project Date: **FEBRUARY 2018**
 Drawn By: **S Kelly**

No.	Description	Date
A3	Addendum 3	2-26-18

Graphic Scale: **VARIES**
 Last Update: **2/26/2018 11:33:40 AM**

M101R

